

# LEGISLATIVE UPDATE

## Senator Laura Thielen

DISTRICT 25: KAILUA - WAIMANALO - HAWAI'I KAI

March 2018



*Aloha Waimanalo!*

We are reaching the half-way point in the session, where we vote on which Senate bills will move to the House. I'm including a few bills in this newsletter

that are moving through the legislature. If any of these topics or any other topics matter to you, now is the time to weigh in on any bills. Mahalo,

*Laura*

### Public Pre-Kindergarten Program

Two schools on the windward side have been selected for the public pre-k program, Kailua and Keolu Elementary.

For more information on eligibility and to download an application go to: <http://earlylearning.hawaii.gov/>



### The Preschool "Open Doors Program"

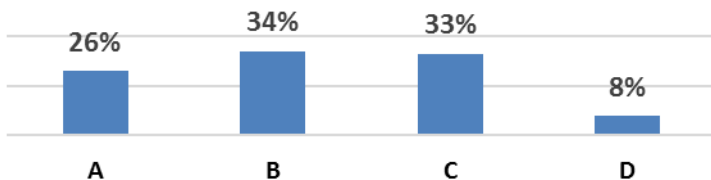
This program provides subsidies for preschool tuition.

Interested families may request an application at [www.patchhawaii.org](http://www.patchhawaii.org) or call 791-2130, toll free 1-800-746-5620. Applications are being accepted until Thursday, **March 29, 2018.**

Thanks to everyone who took my survey, we had over 725 responses from District 25.

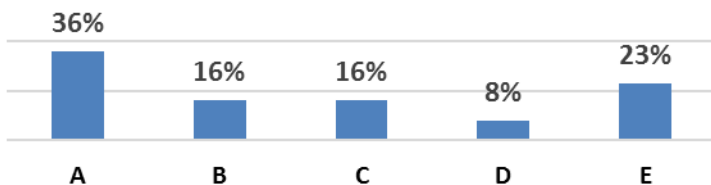
### Here are the 2018 Legislative Survey Results:

**HAWAII VISITOR INDUSTRY:** What do you think is the most important way to reduce the impact of tourism?



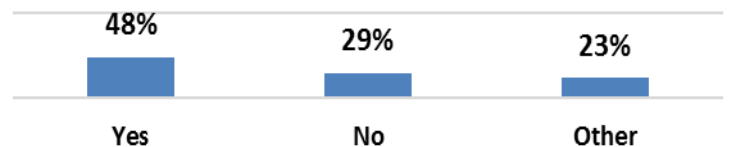
- A. Spend tourism money to maintain parks and trails.
- B. Enforce vacation rentals in residential neighborhoods.
- C. Limit commercial activities in certain public areas.
- D. I don't think the industry has negative impacts.

**PRICE OF PARADISE:** If you could do one thing to reduce the cost of living in Hawaii what would it be?

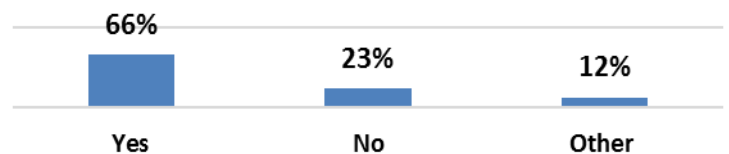


- A. Reduce the cost of housing/property taxes.
- B. Reduce the cost of food/medicine.
- C. Improve public education.
- D. Increase wages.
- E. Other.

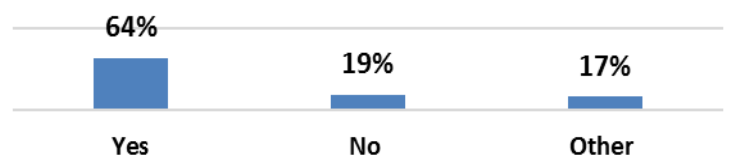
**WORKFORCE HOUSING:** Do you support the State investing in building workforce housing on State properties along the Rail line?



**MINIMUM WAGE:** Do you support continuing to step up the minimum wage over the next 3 years from \$10.10 to \$15.00/hr?



**CHRONICALLY HOMELESS:** Would you support a long-term service/shelter for mentally ill homeless in your district?





## BILLS TO WATCH

**CROSS OVER:** Bills are initiated in the Senate or the House Chamber. Bills have to pass all Committees in their originating chamber by March 2nd in order to “Cross Over” to the other Chamber (House ↔ Senate). The following is a sample of Senate Bills that are getting ready to Cross Over to the House Chamber.

### HOUSELESSNESS

**SB2501** Requires the Department of Human Services to establish safe zones where homeless persons may reside.

### MAUNAKEA

**SB3090** Establishes the Mauna Kea Management Authority, and removes U.H. and D.L.N.R. from management.

### MAKING ENDS MEET

**SB3029** Eliminates state income tax for those at or below the poverty level.

**SB2990** Establishes a State Task Force to create a family leave program in 3-years.

**SB2989** Expands the eligibility and credit amount of the low income-household renters' income tax credit.

### ABANDONED CARS

**SB3049** Implements a \$10 fee for all vehicles shipped to Hawaii. These fees will be used to dispose of abandoned cars.

**SB2479** Requires the counties to take into custody abandoned vehicles on public roads within ten business days.

### ENVIRONMENT

**SB2285** Bans the distribution and sale of plastic straws.

**SB2571** Bans the sale or distribution of oxybenzone products (chemicals in sunscreen that damage reefs).

**SB3099** Sets an 85% recycling redemption rate by 2023.

**SB2930** Requires DOH to adopt rules for underground storage tanks.

### SAVING FOR RETIREMENT

**SB2333** Establishes a retirement savings plan for private sector employees, administered by the state.

### FUNDING LAND & NATURAL RESOURCES

**SB2331** Appropriates monies to Hawaii's statewide trail and access program for trail maintenance and outreach to hikers on trail etiquette & safety.

**SB3048** Appropriates monies to address Hawaii's shortage of conservation enforcement officers, those tasked with protecting our cultural and natural resources.

#### Submit Testimony!

Go to the State Legislature's website at [www.capitol.hawaii.gov](http://www.capitol.hawaii.gov)

Or contact us for any questions about the legislative process. We are here to help you!



Office Staff: (L-R) Debra Shiraishi-Pratt, Jen Barra, Eliza Wilcox, Asami Kobayashi

### CONTACT THE OFFICE OF SENATOR LAURA H. THIELEN

Hawaii State Capitol, Room 231 | Phone: (808) 587-8388 | Fax: 587-7240 | Email: [senthielen@capitol.hawaii.gov](mailto:senthielen@capitol.hawaii.gov)

Website: [www.SenatorLauraThielen.com](http://www.SenatorLauraThielen.com) | Facebook: [www.facebook.com/SenatorLauraThielen](https://www.facebook.com/SenatorLauraThielen)